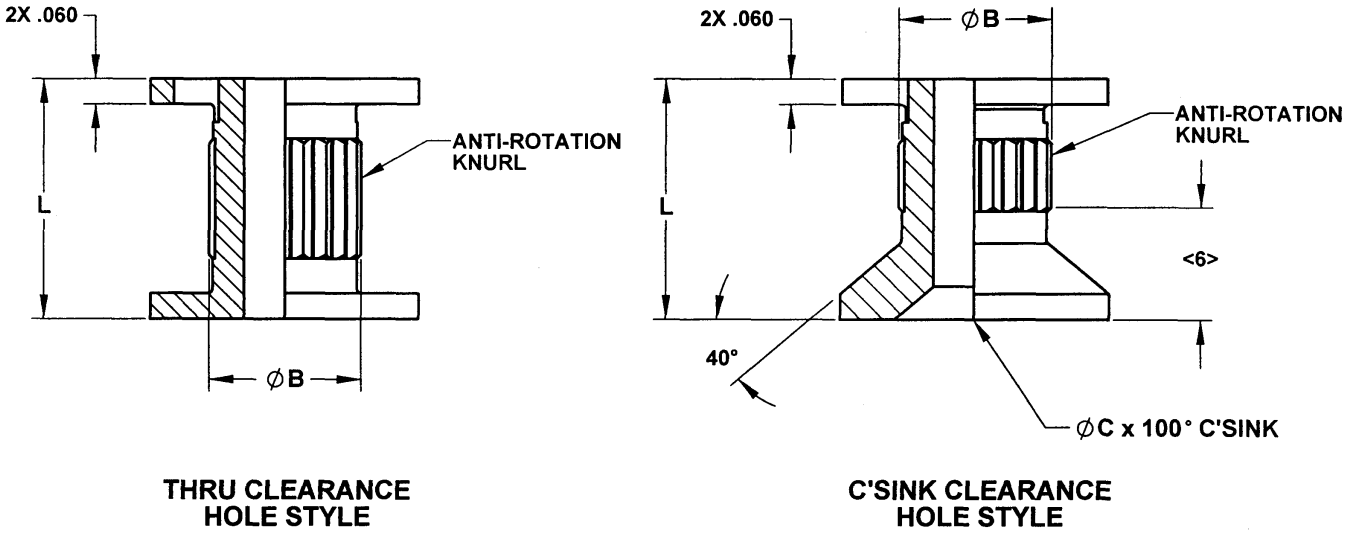
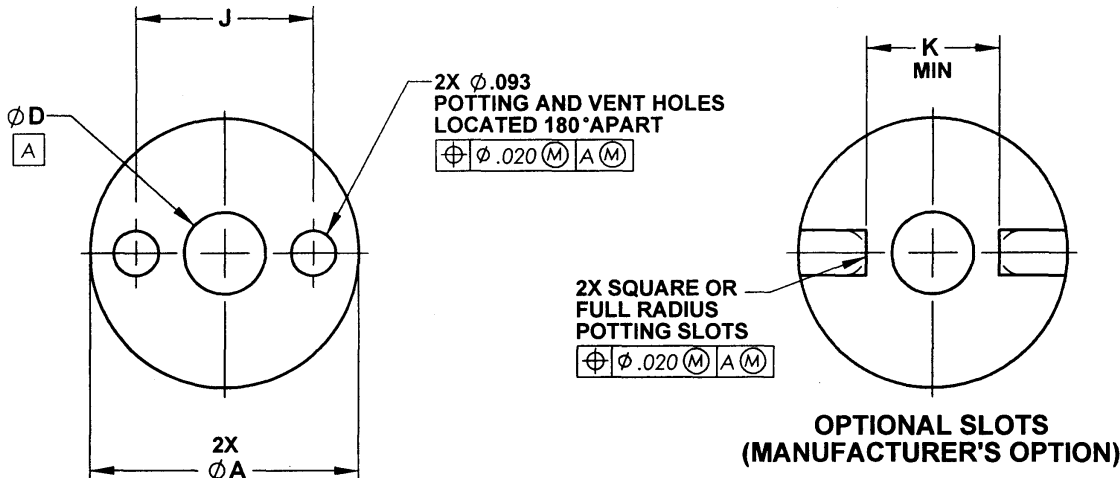


MANUFACTURE OF THE PROPRIETARY PARTS SHOWN HERE WITHOUT WRITTEN CONSENT IS ABSOLUTELY PROHIBITED  
 THIS DRAWING EMBODIES A CONFIDENTIAL PROPRIETARY DESIGN & ALL DESIGN, MANUFACTURING PRODUCTION, USE & SALE RIGHTS REGARDING SAME ARE EXPRESSLY RESERVED.



FIRST DASH NO.	$\phi D$ CLEARANCE HOLE <4>	$\phi A$ +.000 -.010	$\phi B$	$\phi C$	J	K MIN	L MIN <3>	INSTALLATION HOLE SIZE
-06	.139-.145	.560	.30	.280	.367	.260	.250	.561-.566
-08	.168-.174	.560	.30	.332	.367	.260	.250	.561-.566
-3	.195-.201	.560	.30	.385	.367	.260	.250	.561-.566
-4	.256-.263	.685	.37	.507	.467	.360	.312	.686-.691
-5	.315-.322	.685	.47	.625	.467	.360	.312	.686-.691
-6	.376-.383	.841	.50	.750	.591	.375	.375	.842-.847

INTERIM DOCUMENT REVISION		
Rev.	Date	DAF#
J1	10/8/2018	117431

**EQUIV TO NAS1834)**

APPROVED DATE <b>25 JUN 1980</b>	CURRENT DESIGN ACTIVITY: <b>ARCONIC</b> Arconic Fastening Systems	TITLE: <b>INSERT,                  C'SUNK &amp; THRU CLEARANCE                  MOLDED-IN SANDWICH PANEL</b>	CURRENT DESIGN ACTIVITY: <b>CAGE CODE: 83324</b>
REV. LETTER AND DATE <b>J 04 NOV 2010</b>	ROSAN PRODUCTS 3018 W. LOMITA BLVD. TORRANCE, CA 90505	UNLESS OTHERWISE SPECIFIED DIMENSIONS ARE IN INCHES & ASME Y14.5M TOLERANCES:	SALES DRAWING NO. <b>D1834 SERIES</b>
DAF NUMBER <b>94508 SAB</b>	ANGLES DECIMALS XX = ±.3° XXX = ±.02° XXXX = ±.010°	SHEET 1 OF 2	SCANNED

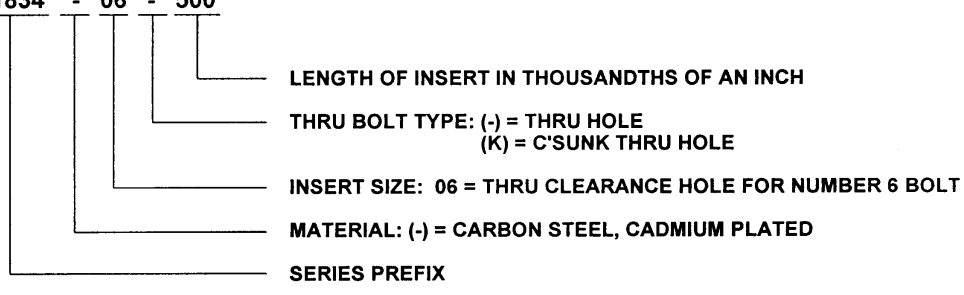
MANUFACTURE OF THE PROPRIETARY PARTS SHOWN HERE WITHOUT WRITTEN CONSENT IS ABSOLUTELY PROHIBITED

THIS DRAWING EMBODIES A CONFIDENTIAL, PROPRIETARY DESIGN & ALL DESIGN, MANUFACTURING PRODUCTION, USE & SALE RIGHTS REGARDING SAME ARE EXPRESSLY RESERVED.

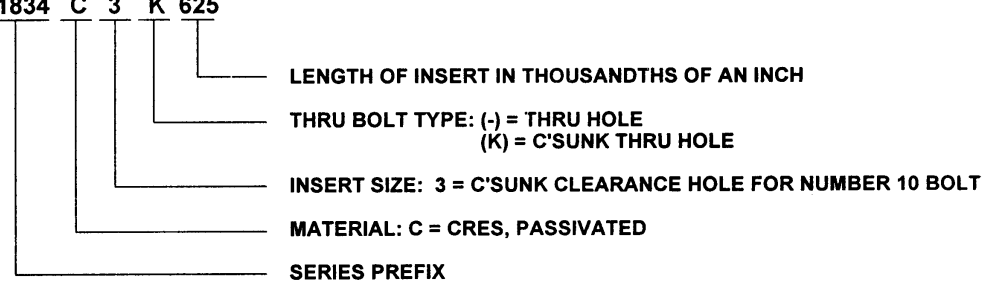
**NOTES:**

1. MATERIAL:
  - 1.1 CARBON STEEL PER ASTM-A108, ASTM-A576, AND/OR AIR4127, ULTIMATE TENSILE STRENGTH 85 KSI MINIMUM.
  - 1.2 303 CRES PER ASTM-A582/A582M.
  - 1.3 ALUMINUM ALLOY 2024-T4 OR T351 PER AMS-QQ-A-225/6.
2. FINISH:
  - 2.1 CARBON STEEL: CADMIUM PLATE PER AMS-QQ-P-416, TYPE II, CLASS 2.
  - 2.2 303 CRES: PASSIVATE PER AMS 2700, METHOD 1, CLASS 4.
  - 2.3 ALUMINUM ALLOY: ANODIZE PER MIL-A-8625, TYPE I, CLASS OPTIONAL.
- <3> LENGTH REQUIREMENTS:
  - 3.1 LENGTH OF INSERT SHALL BE DEFINED BY A THREE DIGIT DASH NUMBER IN THOUSANDTHS OF AN INCH.  
EXAMPLE: -475=.475 IN. -625 = .625 IN.
  - 3.2 FOR SHORTEST LENGTH WHICH MAY BE SPECIFIED SEE TABLE ON SHEET 1.  
BLOCK TOLERANCE APPLY TO ALL LENGTHS INCLUDING SHORTEST.
- <4> TOLERANCES FOR CLEARANCE HOLE PER AND10387.
5. AN ADHESIVE BACKED INSTALLATION TAB SHALL BE FURNISHED WITH EACH INSERT.
- <6> EXTERNAL CONFIGURATION OPTIONAL IN THIS AREA.
7. ALL DIAMETERS SHALL BE WITHIN .010 CIRCULAR RUNOUT TO DATUM A.
8. PART NUMBER EXAMPLES:

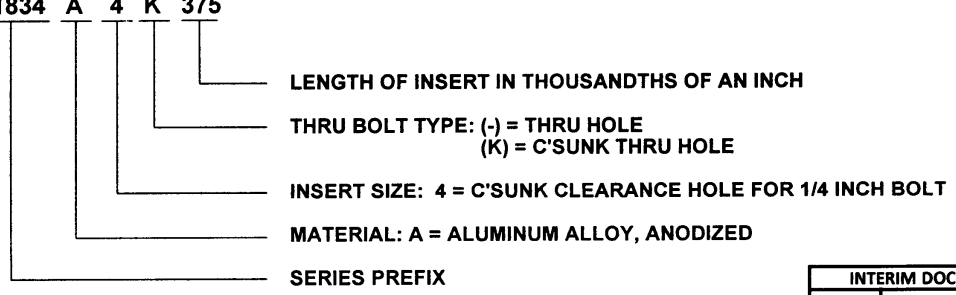
8.1 D1834 - 06 - 500



8.2 D1834 C 3 K 625




8.3 D1834 A 4 K 375



INTERIM DOCUMENT REVISION		
Rev.	Date	DAF#
J1	10/8/2018	117431

ORIGINAL DESIGN ACTIVITY: CAGE CODE 83324

APPROVED DATE <b>25 JUN 1980</b>	CURRENT DESIGN ACTIVITY:  <b>ARCONIC</b> Arconic Fastening Systems	TITLE: <p style="text-align: center;"><b>INSERT, C'SUNK &amp; THRU CLEARANCE MOLDED-IN SANDWICH PANEL</b></p>	CURRENT DESIGN ACTIVITY: <b>CAGE CODE: 83324</b> SALES DRAWING NO. <p style="text-align: center;"><b>D1834 SERIES</b></p>
REV. LETTER AND DATE <del>J 04 NOV 2010</del>	DAF NUMBER <b>94508</b>	UNLESS OTHERWISE SPECIFIED DIMENSIONS ARE IN INCHES & ASME Y14.5M TOLERANCES:	ANGLES DECIMALS .XX = ±.02 .XXX = ±.010
			SHEET 2 OF 2 <div style="border: 1px solid black; padding: 2px; display: inline-block;">SCANNED</div>